

✚ middle entry toilet wc- fibreglass Iberia2011WC toilet for coaches



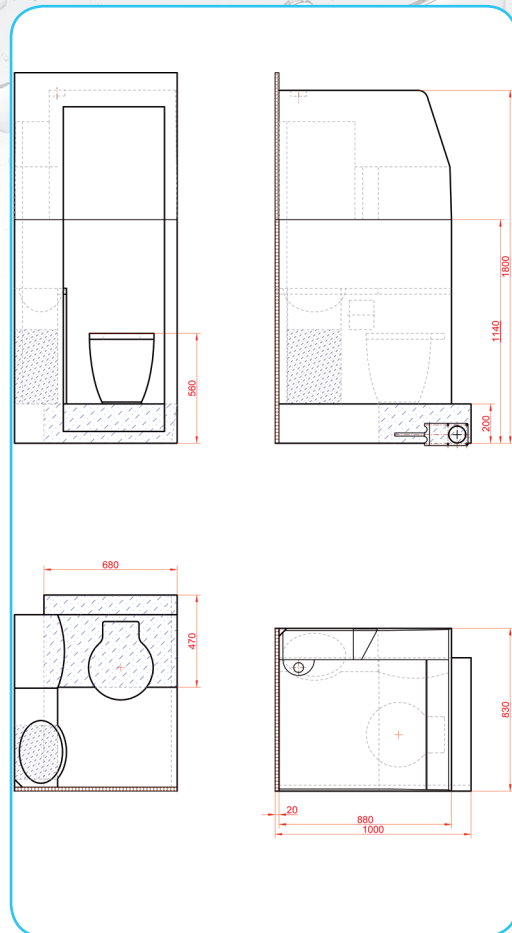
The lavatory cabin consists of several moulded grp-parts, and the split of lower and upper part for an easy installation is serial standard. Inside it is gel-coated in two colours. This coach lavatory is build-up of a grp-sanitary cabin with an integrated stylish porcelain toilet assembly with a functional electric flushing. Instead of a pneumatic toilet valve - a combination of a macerator and a powerful rotary pump-both creating a suction effect - is in operation. This toilet module is also equipped with the well-proven Glova microcontroller.

available with:

- electrical freshwater flushing version (WC) solely 24 V DC
- plastic macerator and rotary pump instead of pneumatic toilet valve
- microcontroller
- porcelain toilet bowl
- slow close lid
- grp-septic tank (variable volume) glued on
- LED-illuminated cabin

main dimensions: 930 x 850 x 1.800 mm; the height is variable
(l x w x h)

net weight: approximately 98 kg (full equipped & ready for connection,
but with empty tanks)



www.glova.com